

135-33.

NOV 5 '25

"TROUBLE-SAVER"

- Carpenter Brackets on the Job -



"TROUBLE-SAVER" SCAFFOLD BRACKETS NEVER INTERFERE WITH YOUR GRADING. YOUR LUMBER IS NEVER TIED UP IN SCAFFOLDING—YOU CAN USE IT AT ANY TIME.

Testimonials From All Parts of the Country.

Here's what one Contractor thinks of them:

Kansas City, Mo.

The Steel Scaffolding Company.

"Enclosed find check in payment of your invoice of the 28th. Thank you very much. I think we owe it to you for inventing and putting on the market such wonderful money-makers as these 'Trouble-Saver' Carpenter Brackets are. We find that they have paid for themselves on the first job we put them on. We are using them every day. Thanking you for past favors."

ERWIN & PENNINGTON.

THE BEST INSURANCE YOU CAN GET AT THE PRICE.

Manufactured by

THE STEEL SCAFFOLDING COMPANY

Evansville, Indiana

"Trouble-Saver" Carpenter Scaffold Brackets

(PATENTED)

The only SAFETY-FIRST SCAFFOLD BRACKET on the Market.

MADE OF RAIL-CARBON STEEL—THEY DO NOT BEND AND WILL LAST A LIFETIME.

YOU CUT THE HOLE TO SUIT
WITH SHEATHING

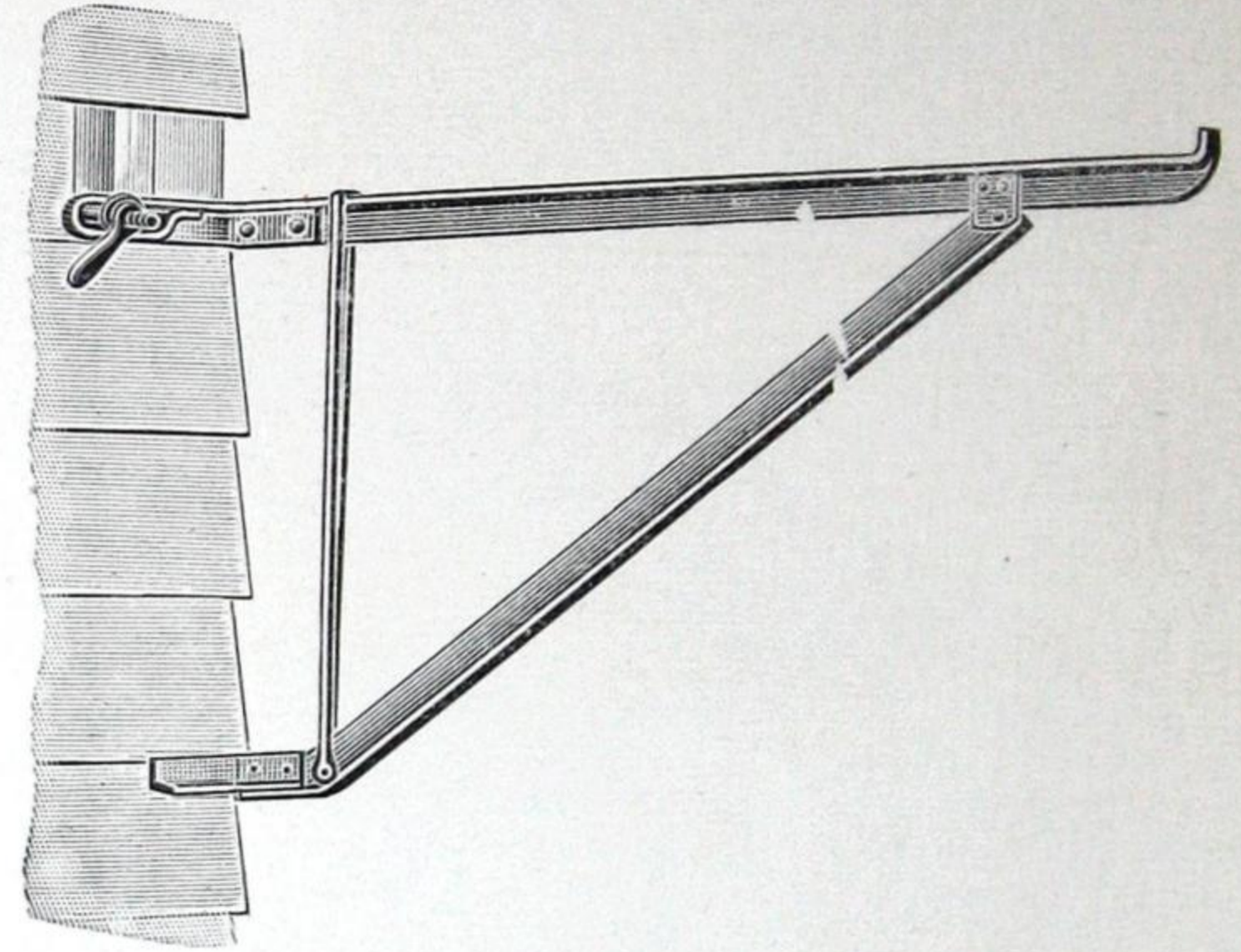
CARPENTER CORNER BRACKETS
Attach to the Corner Post by Two Clamp Bolts.



Folded for Cartage and Storage



They Occupy Little Space.



CARPENTER BRACKETS

Length	Price Per Dozen	Weight Per Dozen
2½ Feet	\$27.00	146 Lbs.
3 Feet	30.00	158 Lbs.
3½ Feet	36.00	197 Lbs.
4 Feet	42.00	234 Lbs.

CARPENTER CORNER BRACKETS

Length	Weight per brkt.	Price per brkt.
4 Feet	15 Lbs.	\$4.25
4½ Feet	16½ Lbs.	4.50

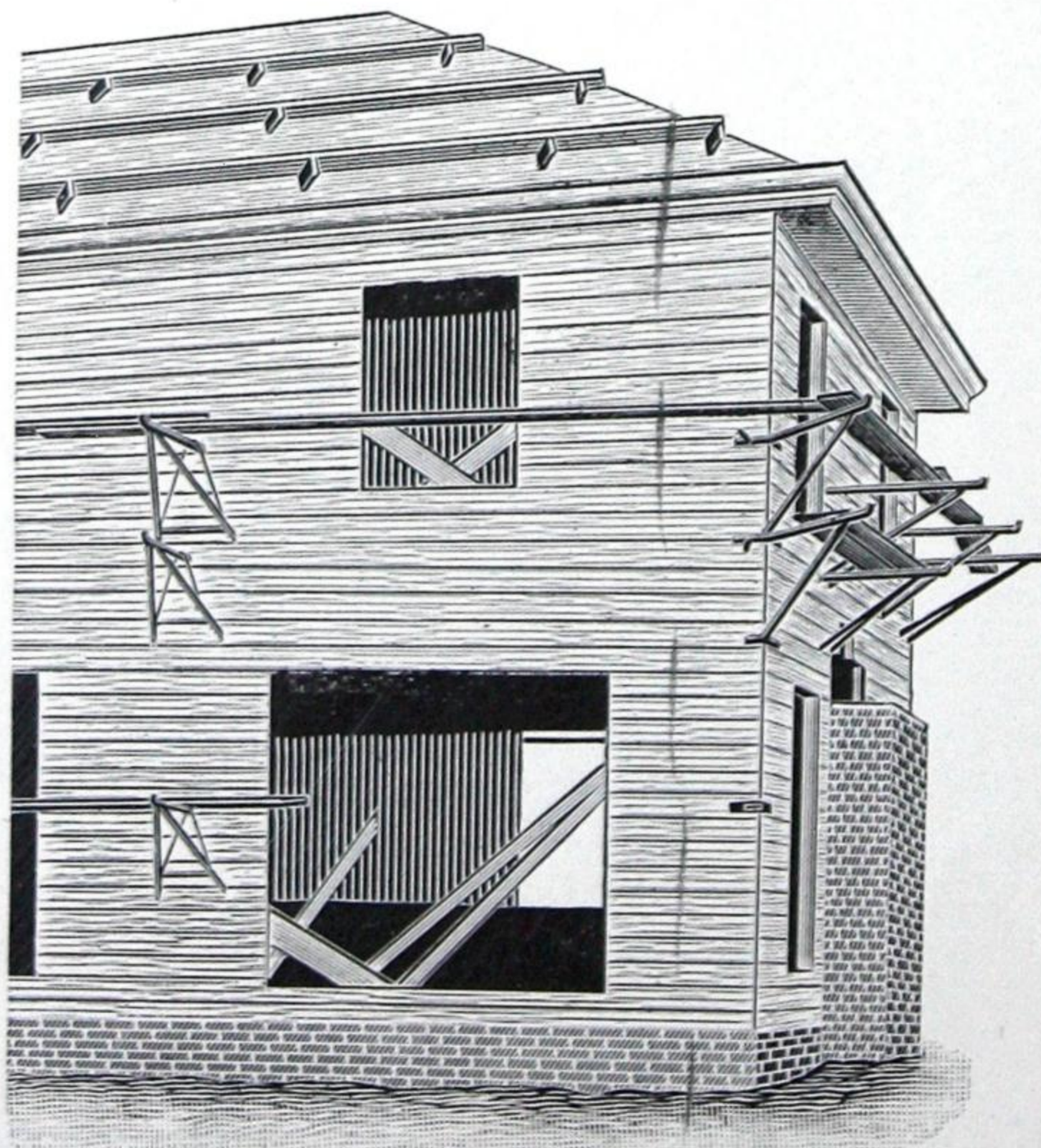
F. O. B. Evansville, Indiana.

The Two Legs Brace
"TROUBLE-SAVERS"
At The Right Place

Have The Maximum
Strength With The
Minimum Weight.

Nothing to Adjust
Nothing to Wear Out
Nothing to Lose

THEY CAN'T WOBBLE
WILL SUPPORT A TON
WILL LAST A
LIFETIME



"TROUBLE-SAVER"
CORNER BRACKETS
Fill That Gap
Around the Corner

Do the Work of Two
Brackets

They Are Just the
Trick For Wide Cornices

They Are As Necessary
As The Regular Brackets

NO SIDE MOTION

"Trouble-Saver" Stucco - Scaffold Brackets

(PATENTED)

"Trouble-Saver" Stucco Brackets



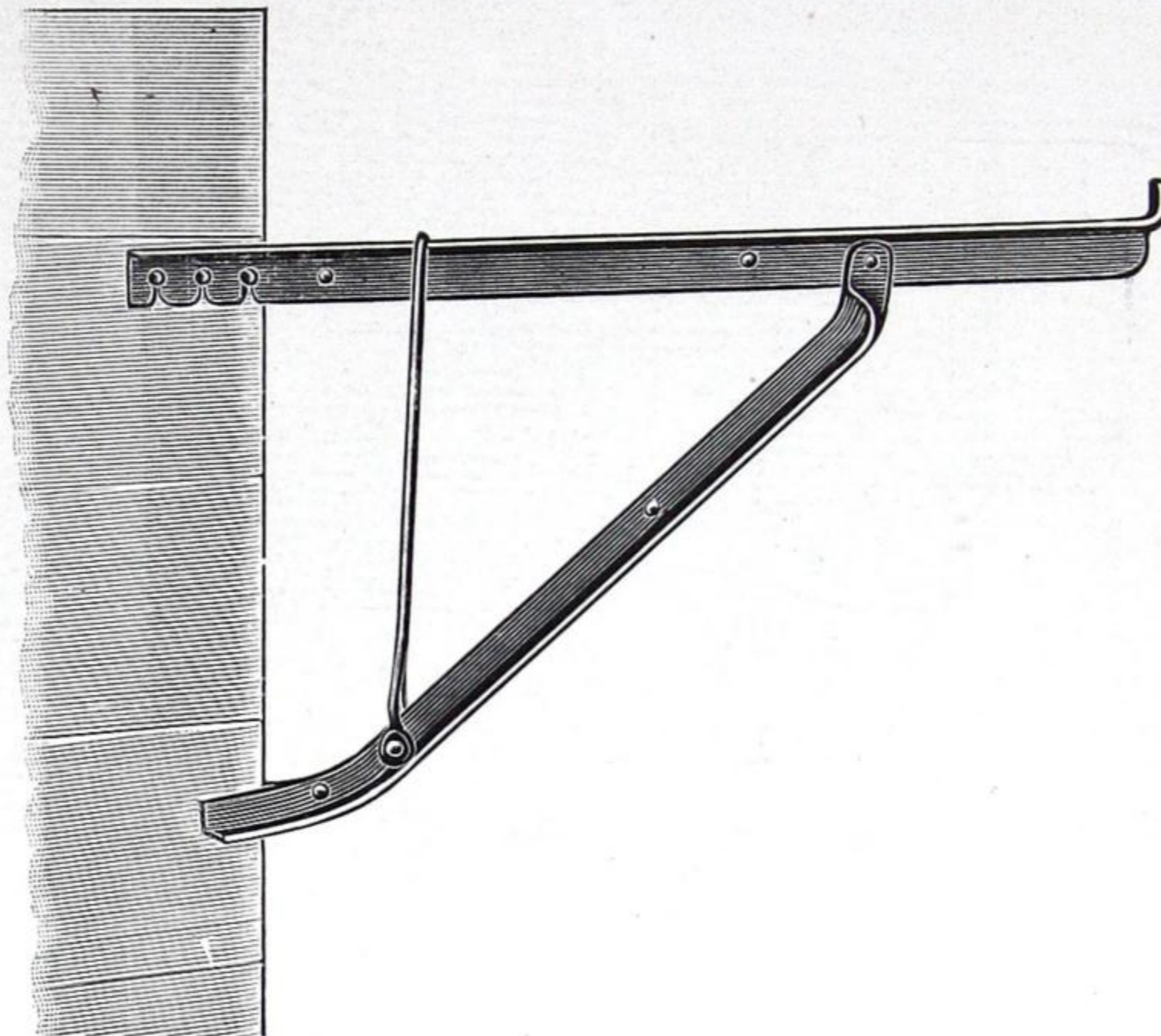
Attached to the wall with Four 10, 16 or twenty penny nails, driven into the studding—they are tested for a ton weight—more than they will ever be called upon to sustain.

Folded for Cartage and Storage



They Occupy Little Space.

Stucco Corner Brackets



Attach to Building with 10, 16 or 20 Penny Nails.

Length	Price Per Doz.	Weight Per Doz.
3 Feet	\$33.00	158 Lbs.
3½ Feet	39.00	197 Lbs.

Length	Weight per brkt.	Price per brkt.
4 Feet	15 Lbs.	\$4.00
4½ Feet	16½ Lbs.	4.25

F. O. B. EVANSVILLE, IND.

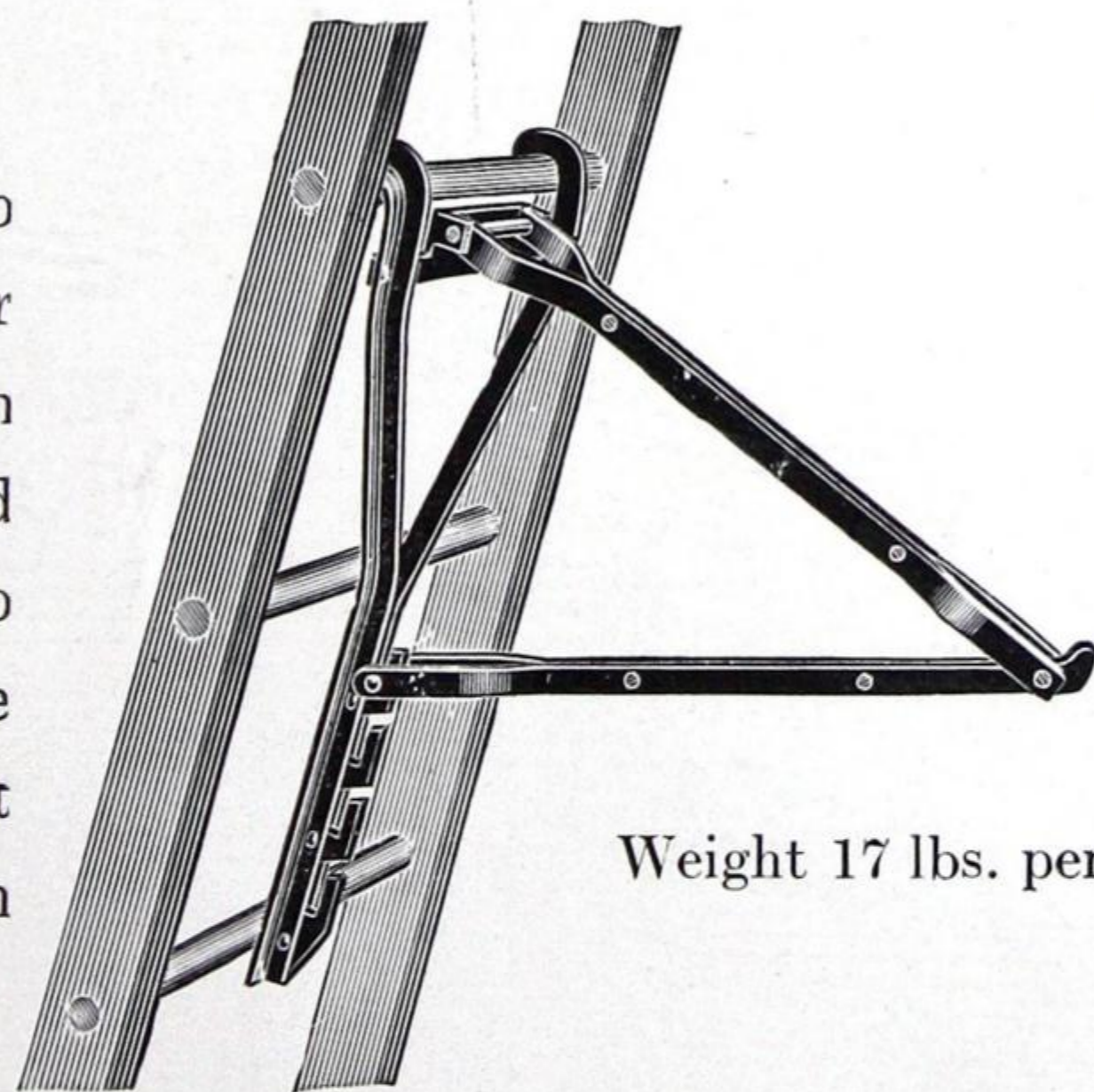
— A Ladder Jack that is a Cracker Jack —

Use them either way—
UNDER

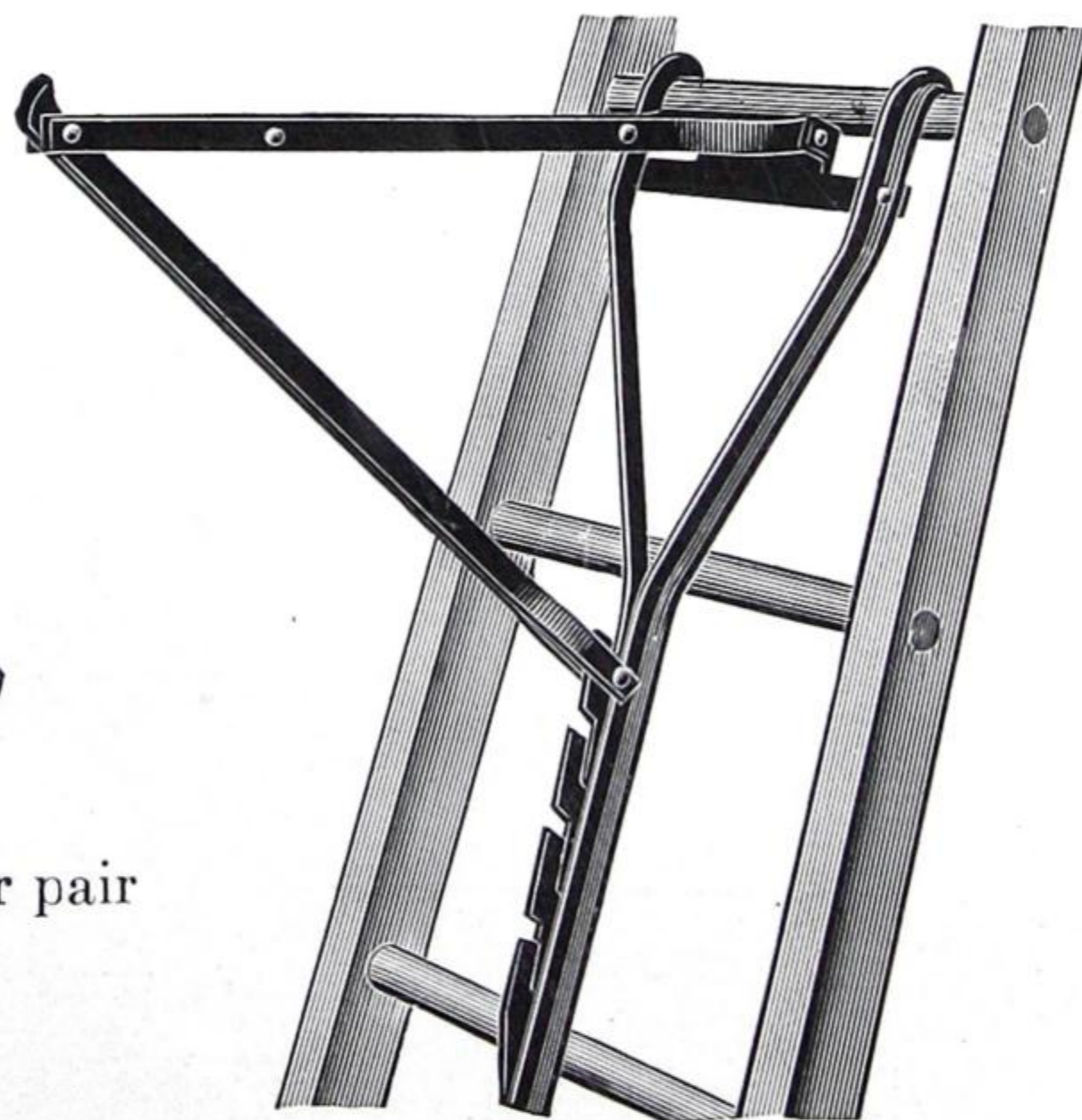
or

They are always rigid.
OVER

No Painter can afford to be without them



Weight 17 lbs. per pair



Don't take our word for it. Put them on the job and prove it for yourself.

Satisfaction guaranteed or your money refunded.

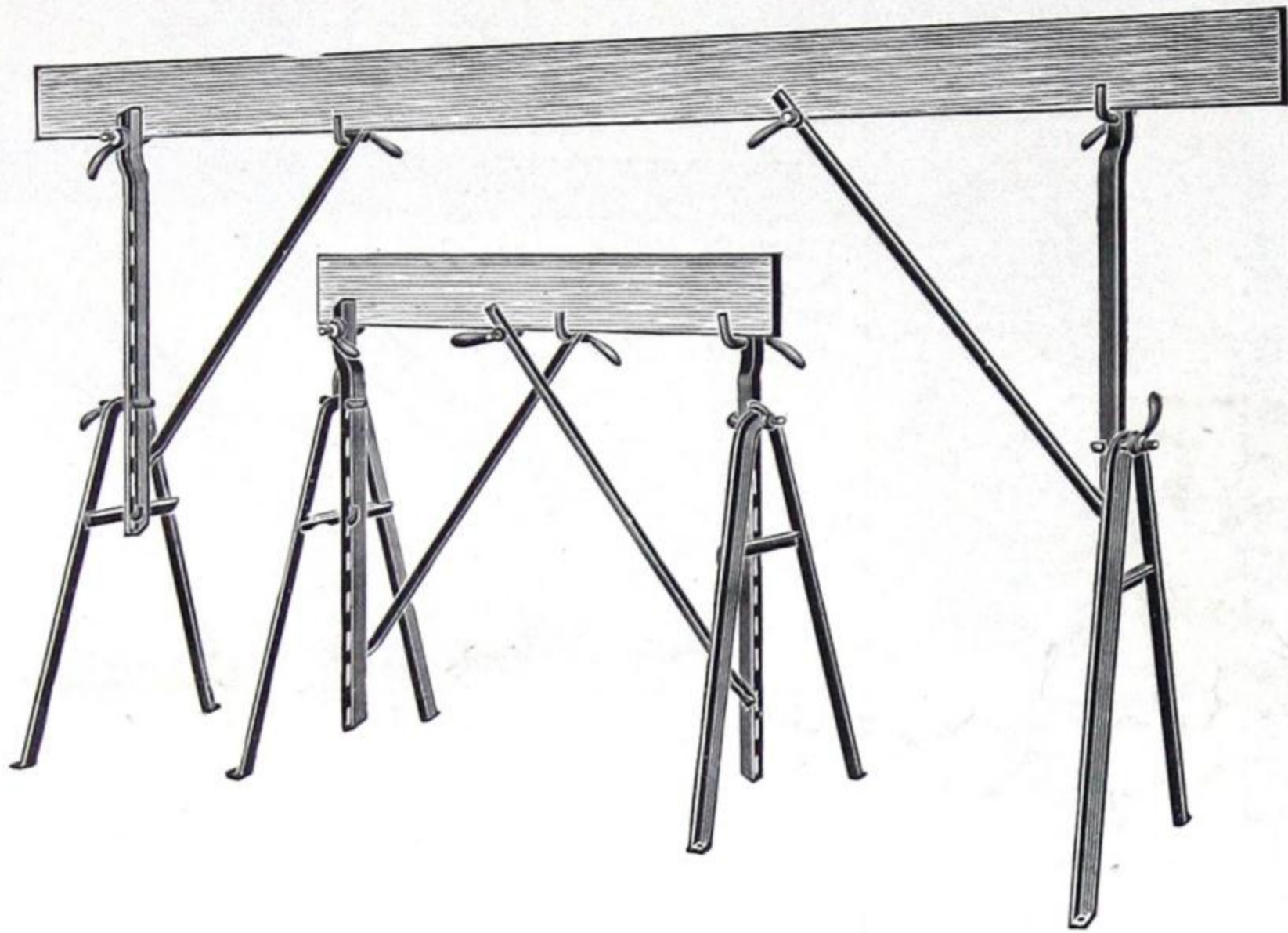
UP-TO-DATE DEALERS HAVE THEM IN STOCK.

THE PRICE:—\$6.00 the PAIR. F. O. B. EVANSVILLE, IND.

Ask your hardware or paint dealer to show you a pair. If they haven't any in stock—write us and we will ship you direct.

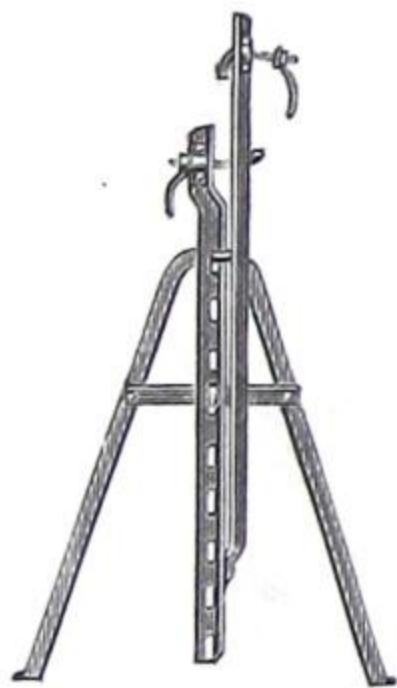
ADJUSTABLE TRESTLES

For Plasterers, Contractors, General Utility, Etc.



Two Trestles of Same Size, Showing Range of Adjustability

Folded For Cartage



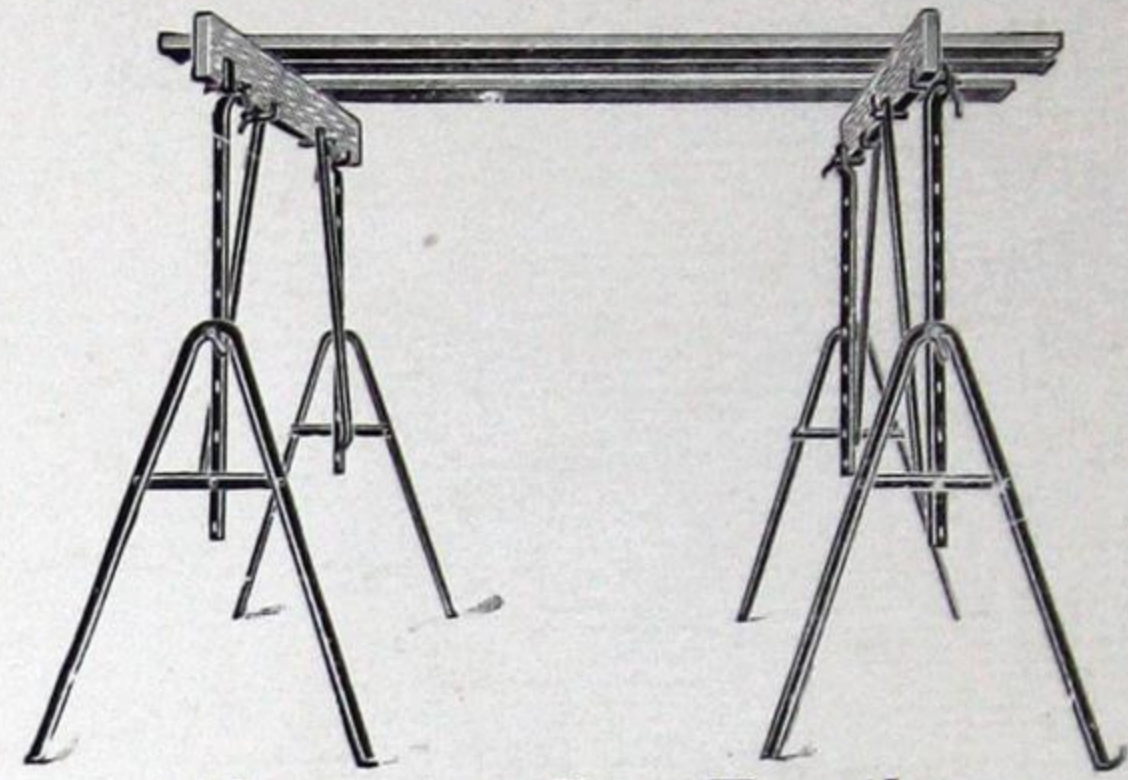
Each Trestle tested out for a ton. Folded for Cartage and Storage, they occupy very little space.

"Trouble-Saver" Trestles are the handiest on the market.

"Trouble-Savers" are a permanent investment and save expense on every job. They are the lightest, safest and best on the market. Give them a trial — you

will be more than satisfied.

Prices Quoted are per Trestle



Above Are Two Trestles

Heights Quoted for a 2x4 Timber as Ledger
Use any Timber from a 2x4 to 2x12

	Weight per Trestle	Price per Trestle
No. 2—is 16 inches high at lowest point and 22 inches high at highest point.....	16 Lbs.	\$ 5.00
No. 3—is 2 feet high at lowest point and 3 feet high at highest point	21 Lbs.	6.00
No. 4—is 3 feet high at lowest point and 4 $\frac{1}{4}$ feet high at highest point	31 Lbs.	7.00
No. 6A—is 4 feet high at lowest point and 6 feet high at highest point	52 Lbs.	9.00
No. 8A—is 5 $\frac{1}{2}$ feet high at lowest point and 8 feet high at highest point	71 Lbs.	12.00
No. 10A—is 6 $\frac{1}{2}$ ft. high at lowest point and 10 ft. high at highest point	100 Lbs.	18.00

All Trestles Adjust in 3-inch Heights.
QUOTATIONS DO NOT INCLUDE TIMBERS

ROOF BRACKETS

ROOF BRACKETS

"Trouble-Saver"

Asphalt Shinglers



FOR
ASPHALT
SHINGLES

Two nails can be used when thought necessary. Not necessary to raise shingle to remove.

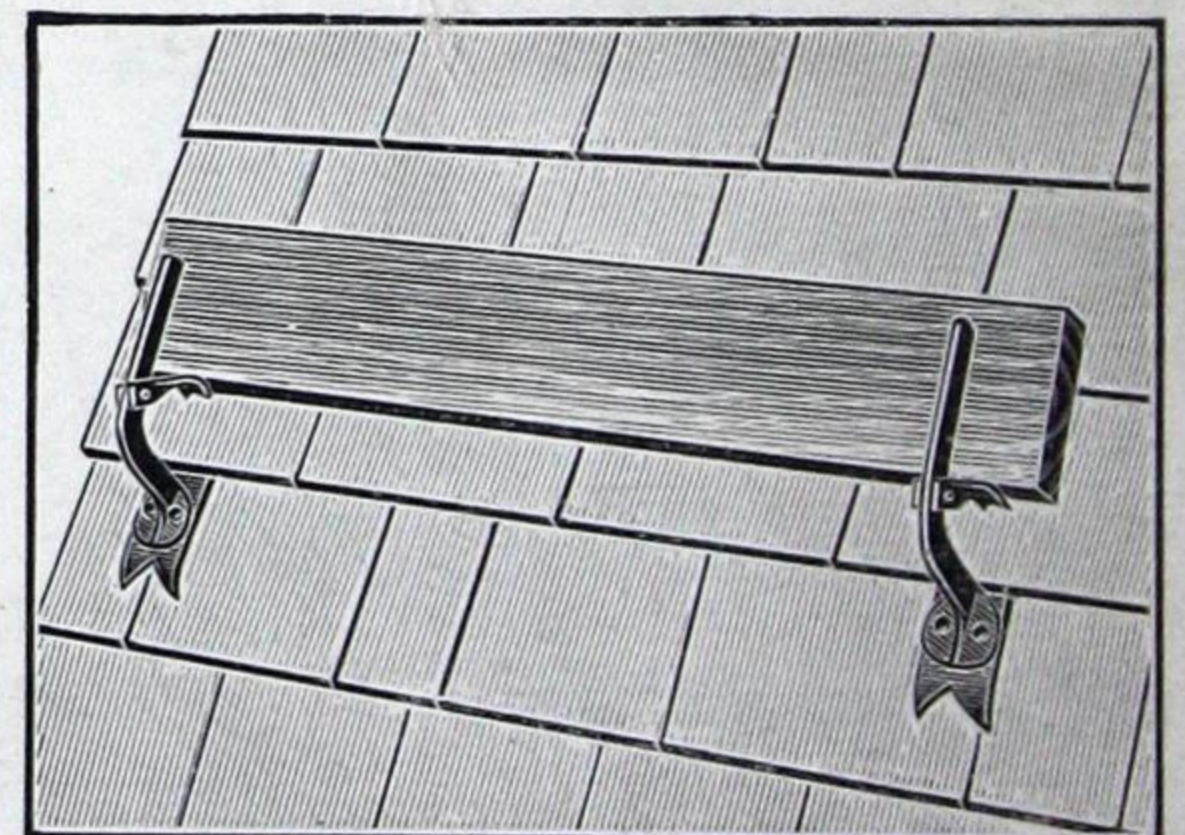
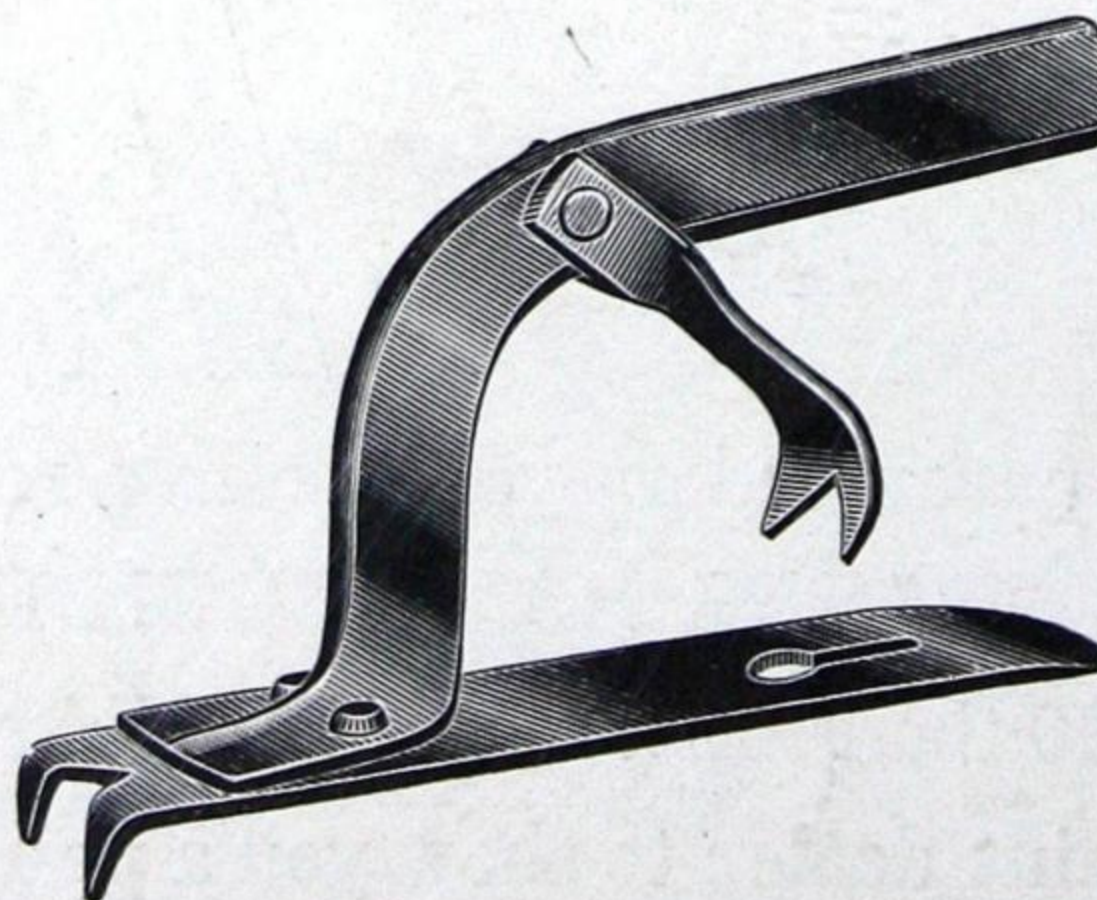


(Weight—16 Pounds to the Dozen)
PRICE---\$6.00 PER DOZEN
F. O. B. EVANSVILLE, INDIANA

"Snapping Turtle"

Shingler

FOR WOOD SHINGLES



One Second to Place in Position
One Second to Remove
No Roof Too Steep
ABSOLUTELY SAFE—
Will Last a Lifetime
(Weight—10 Pounds to the Dozen)

PRICE---\$9.00 PER DOZEN
F. O. B. EVANSVILLE, INDIANA